

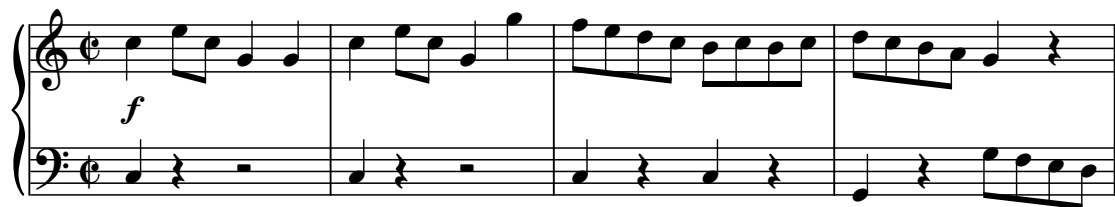
# Sonatina n.1

Op.36



M.Clementi

Allegro ♩ = 160



(16)

*p*

*b*

(20)

*f*

*b*

(24)

*p*

(28)

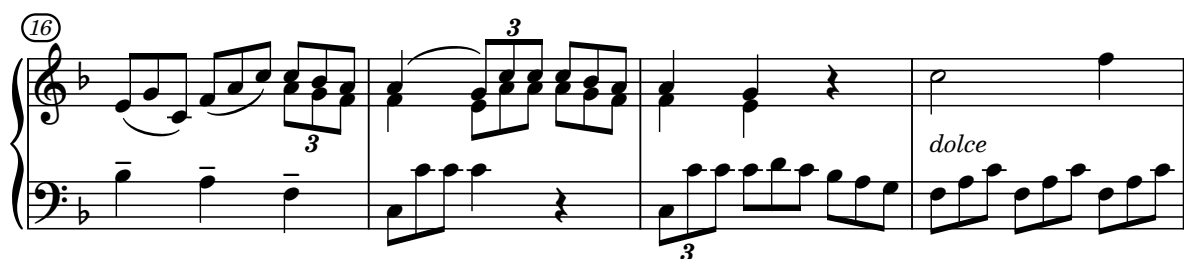
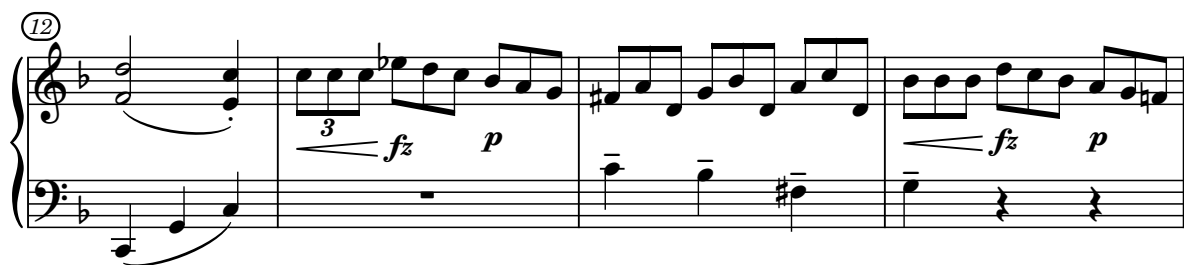
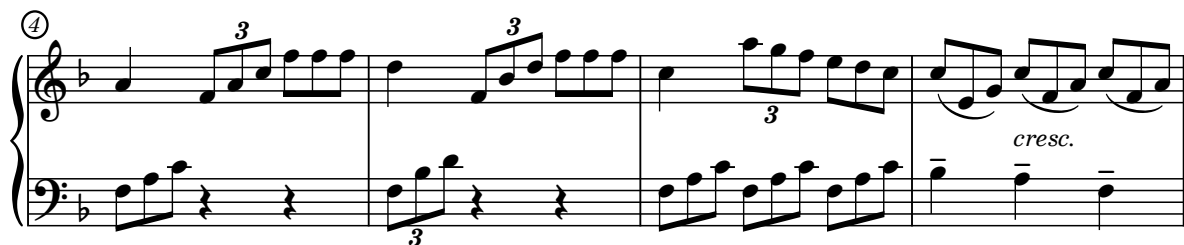
*cresc.*

*f*

(32)

(36)

Andante ♩ = 62



(20)

tr  
f  
dim.  
3  
cresc.

This system contains measures 20 through 23. Measure 20 has a treble clef with a whole note and a bass clef with a half-note triplet. Measure 21 has a treble clef with a half note and a trill, and a bass clef with a half-note triplet. Measure 22 has a treble clef with a half note and a trill, and a bass clef with a whole note. Measure 23 has a treble clef with a half note and a trill, and a bass clef with a half-note triplet. Dynamics include *f*, *dim.*, and *cresc.*. A trill is marked in measure 21.

(24)

tr  
f  
3

This system contains measures 24 through 26. Measure 24 has a treble clef with a half note and a trill, and a bass clef with a half-note triplet. Measure 25 has a treble clef with a half note and a trill, and a bass clef with a half-note triplet. Measure 26 has a treble clef with a half note and a trill, and a bass clef with a half-note triplet. Dynamics include *f*. A trill is marked in measure 24.

Vivace

p

This system contains measures 27 through 32. The tempo is marked *Vivace*. The key signature changes to one sharp (F#). The time signature is 3/8. The piece starts with a piano (*p*) dynamic. The music features a continuous eighth-note pattern in the bass and a more melodic line in the treble.

(9)

f  
p

This system contains measures 33 through 38. The piece continues with the same 3/8 time signature and one sharp key signature. It starts with a forte (*f*) dynamic and ends with a piano (*p*) dynamic. The music features a continuous eighth-note pattern in the bass and a more melodic line in the treble.

(18)

f  
p  
f

This system contains measures 39 through 44. The piece continues with the same 3/8 time signature and one sharp key signature. It starts with a forte (*f*) dynamic, moves to piano (*p*) in measure 41, and returns to forte (*f*) in measure 43. The music features a continuous eighth-note pattern in the bass and a more melodic line in the treble.

26

*dim.* *p*

34

*pp*

42

*f*

51

*p* *f*

59

*p* *f*

65

*ff*